

汽车立柱纹理趋势

Auto Pillar Texture Trends

architecture
design consultancy



MAINSTREAM

AUTO PILLAR TEXTURES

目前主流汽车立柱纹理

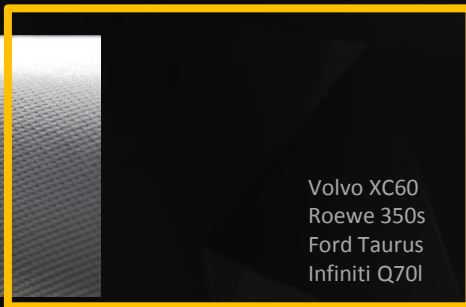
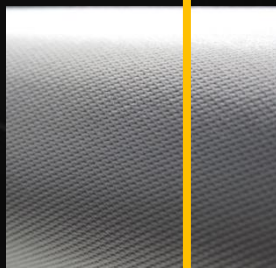
1

WEAVE Plus material

编织纹 面料

面料编织纹理是目前大部分中大型车立柱的首要选择
适用车型：B/C/D级等

Weave Texture is the first choice for middle-large size vehicles
Model: B/C/D class



Volvo XC60
Roewe 350s
Ford Taurus
Infiniti Q70l

WEAVE

Classic wheat form

编织纹 经典麦穗

麦穗的元素模拟经典的编织面料的纹理，一方面降低成本，另一方面多变选项

适用车型：A、B、C级、中小型SUV等

The elements mimic the texture of the classic woven fabrics, while reducing costs and changing options on the Textures.

Models: A, B, C, small and medium sized SUV

Hyundai sonnata
Cadillac XTS
Ford escape
Audi Q3 40 TFSI quattro
Ford focus

GEOMETICAL ELEMENTS

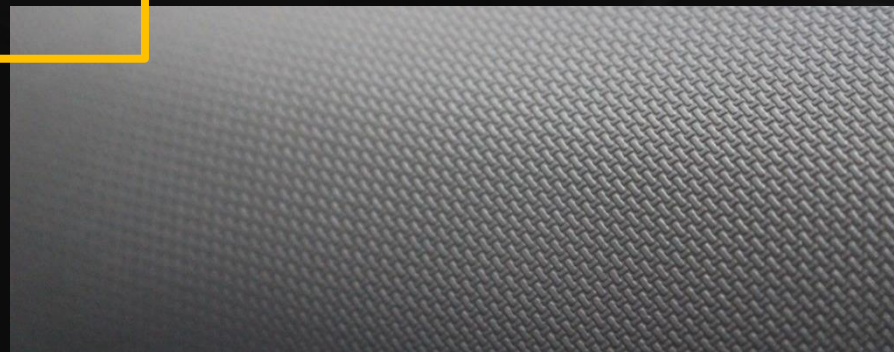
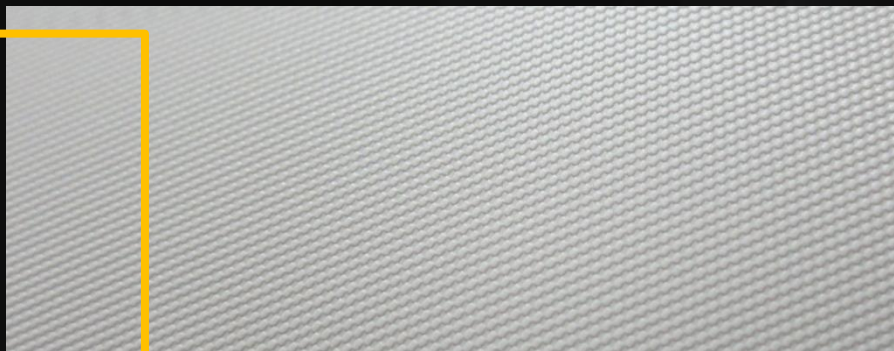
Break tradition

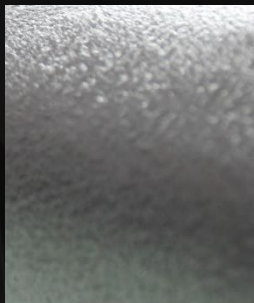
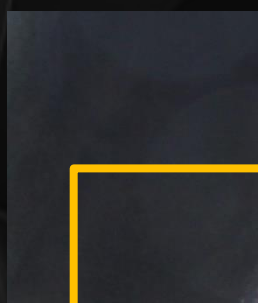
几何编织 突破传统

简单几何元素的有规则排列，不仅整体上有编织的视觉，在细节上，则有更多突破
适用车型：A、A0级等

Regular arrangement of simple geometric elements, not only on the whole have woven the visual, in detail, have more breakthroughs,
Models: grade A, A0, etc

Baic EU260
Smart Forfour
Ford Everest





Cadillac 62V8AWD
Cadillac XT5
Lincoln MKX
Jaguar XFL
Nissan Teana

4

UNIQUE TEXTURE

True Touch

桃皮绒纹 真实触感

桃皮绒材质的运用，一方面提供了柔软舒适的触感，另一方面提升了车内空间的品质与质感
符合车型：B/C/D/E级等

The application of peach skin wool material, provide soft and comfortable tactile feeling ,raise the quality and sense of interior space
Model: B/C/D/E Class

5

SPRAY/ WORM

Insect Fractal

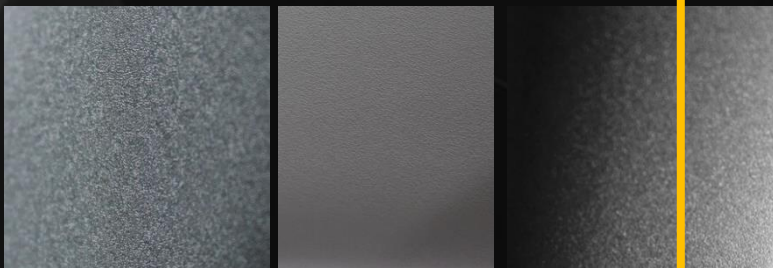
喷纹、虫纹 细致有趣

喷纹、虫纹的纹理，细致有形，形似磨砂之细腻，又相似于桃皮纹的视觉感，形态丰富且趣味性较强

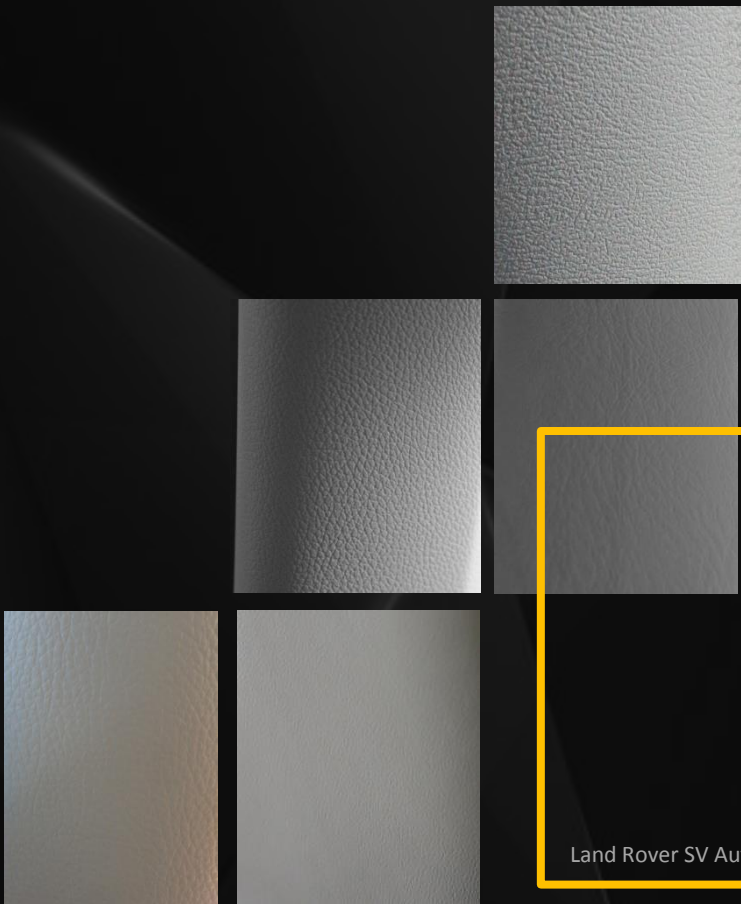
符合车型：C、D级等

Spray, worm Grain, Detailed and tangible, it is similar to the fine texture of grinding sand, which is similar to the visual sense of peaches, enrich in form and interest

Model: C,D class



Benz Vito
Ford mustang
Nissan Quest
Infiniti ESQ



MG 3
KIA K5
Mazda CX-9
Buick GL8
Land Rover SV Autobiography

6

NATURAL LEATHER Elements

自然真皮 中性

自然纹理直接运用在立柱上，成熟稳重，中性
符合车型：B、C级、MPV等

Natural texture direct use on pillars, mature stable, neutral meet Models: B,
C, MPV, etc